

The image features a background of wooden panels on the left and a pile of blue beads on the right. The word 'CLADDING' is written in large, white, bold, sans-serif capital letters across the center of the wooden panels.

# CLADDING

**PARKLEX PRODEMA**

# **CLADDING**

**PARKLEX PRODEMA**



NATURCLAD-W is a laminated wood board for exteriors that requires zero maintenance.

The panels combine the virtues of wood, its natural warmth and beauty, with technical requirements to ensure optimum performance on exteriors over time.

NATURCLAD-W can be installed as a ventilated façade by way of louvres or overlapping slats, on false ceilings and on curved walls.

Product: NATURCLAD-W / Wood: Rustik  
Sutton Offices in Magog (Quebec, Canada)



## Zero maintenance wood

The surface composition of the NATURCLAD-W boards protects the wood from the most extreme weather conditions, removing any need for subsequent treatment.

## Weather resistance

The EN 438-6:2005 European standard specifies that compact exterior cladding such as NATURCLAD-W must offer a certain resistance to weather according to the Resistance to Artificial Weathering Test. After 3000 hours of exposure, the material should have a rating variation of  $\geq 4$  in appearance, and a rating of  $\geq 3$  in contrast. NATURCLAD-W attains these values following exposure of up to 5 times greater than regulatory requirements.

## Fire safety

The basic safety requirements reduce the risk of damage caused by accidental fire due to the characteristics of the project, construction, use and maintenance of the building to acceptable limits. NATURCLAD-W has achieved the best possible result for organic materials under regulations EN 13501 and US ASTM/NFPA for reaction to fire, which means that our products are approved all over the world.

## Installation versatility

NATURCLAD-W can be installed as a ventilated façade by way of louvres or overlapping slats, on false ceilings and on curved walls. It has four different installation systems, which makes them easily adaptable to any kind of architectural requirement.

Product: NATURCLAD-W / Wood: Rustik  
Paleen View Residence, by Workshop AD  
(Anchorage, AK, USA)



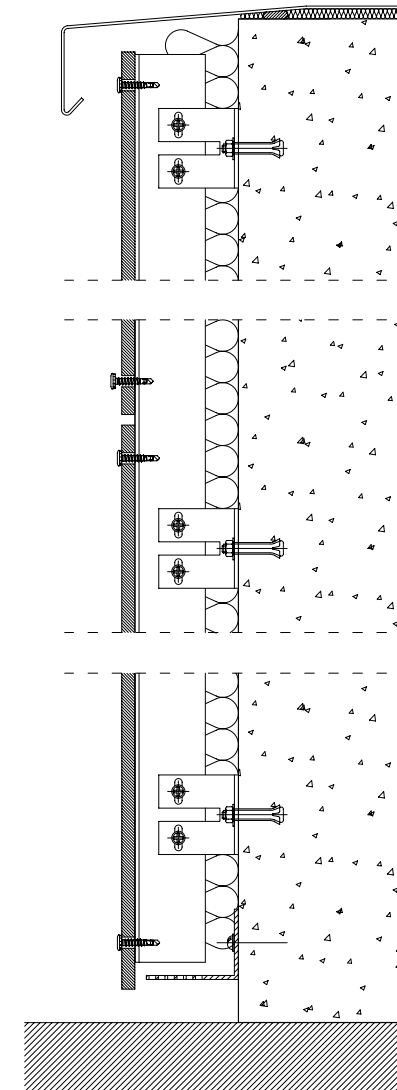


Product: NATURCLAD-W / Woods (from left to right): Pale, Onix, Rustik  
Residences in Pacific City, by MVE Architects (Huntington Beach, CA, USA)





Product: NATURCLAD-W / Wood: Rustik  
Residences in Pacific City, by MVE Architects  
(Huntington Beach, CA, USA)



The ventilated façade is an efficient bioclimatic architecture solution that provides thermal insulation. In other words, it reduces heat dissipation in the cold months and heat absorption in the warmer months, resulting in a marked improvement in comfort inside the building.





Product: NATURCLAD-W / Wood: Onix  
Manning Toronto, by Richard Wengle Architects Inc. (Toronto, ON, Canada)





Product: NATURCLAD-W / Wood: Rustik  
Lazaridis Hall, Wilfrid Laurier University, by Diamond Schmitt Architects  
with David Thompson Architect Ltd. (Waterloo, Ontario, Canada)



Product: NATURCLAD-W / Wood: Quartz  
Turnagain Beach House Anchorage, by KPB Architects (Alaska, AK, USA)





Product: NATURCLAD-W / Wood: Rustik  
The Point, Tadley Community Centre, by Ayre Chamberlain  
Gaunt Architects (Hampshire, UK)



Product: NATURCLAD-W / Wood: Rustik  
Residence in Varese, by Franzetti Primi Architetti Associati (Varese, Italy)







Product: NATURCLAD-W / Wood: Rustik  
Residences in Rue des Orteaux, by Bob361 Architectes (Paris, France)



Product: NATURCLAD-W / Wood: Rustik  
Rainbow Group Headquarters, by Studio Bianchi  
(Loreto, Ancona, Italy)







Product: NATURCLAD-W / Woods: Rustik and Antra  
Gateway Apartments, by Brooks+Scarpa Architects (Marina Del Rey, CA, USA)



The NATURCLAD-W panels are available in nine shades that are obtained through ayous or okume veneer, which we get from forests that respect controlled felling.



**AMBAR**



**ANTRA**



**NUX**

Due to the fact that wood is a natural product, each veneer must be considered as unique. The presence of slight differences in colour and structure is normal. Peculiarities such as knots or resin inclusions are not considered to be defects, but as part of the decoration. Depending on the species and the source of the wood, differences in performance may be observed, as regards the colour's light fastness. For this reason, no claims will be admitted on the basis of changes in tone between the sample and the end product.



**RUSTIK**



**QUARTZ**



**PALE**



**RUBI**

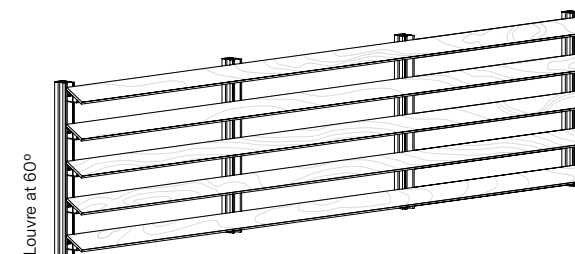
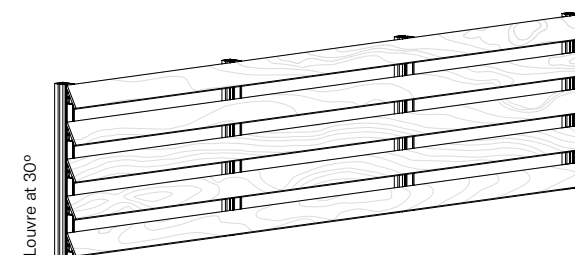
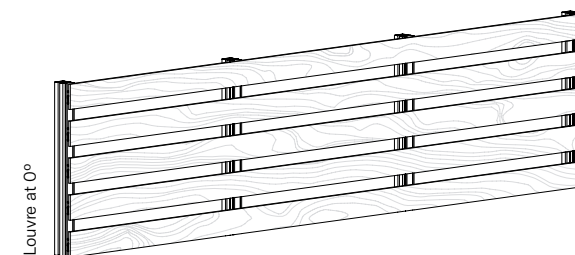


**ONIX**



**SILVER**

Product: NATURCLAD-W / Wood: Rustik  
Le Monastère des Augustines, by ABCP  
Architecture (Quebec, Canada)

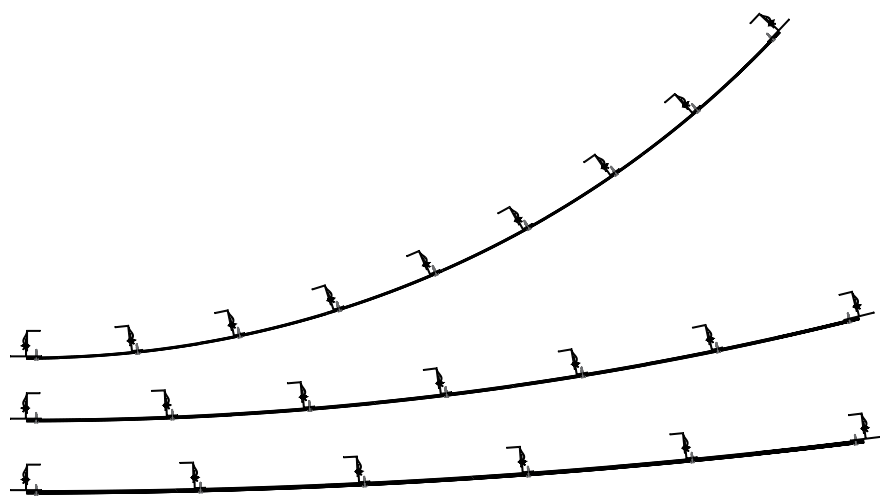


The NATURCLAD-W installation system in fixed louvre mode enables slats to be installed at 0°, 30° and 60°, both horizontally and vertically.

Valid for boards with a thickness of  $\geq 10$  mm. Parklex Prodema supplies the slats in three different widths: 86, 94 and 114 mm, with a maximum slat length of 2440 mm.

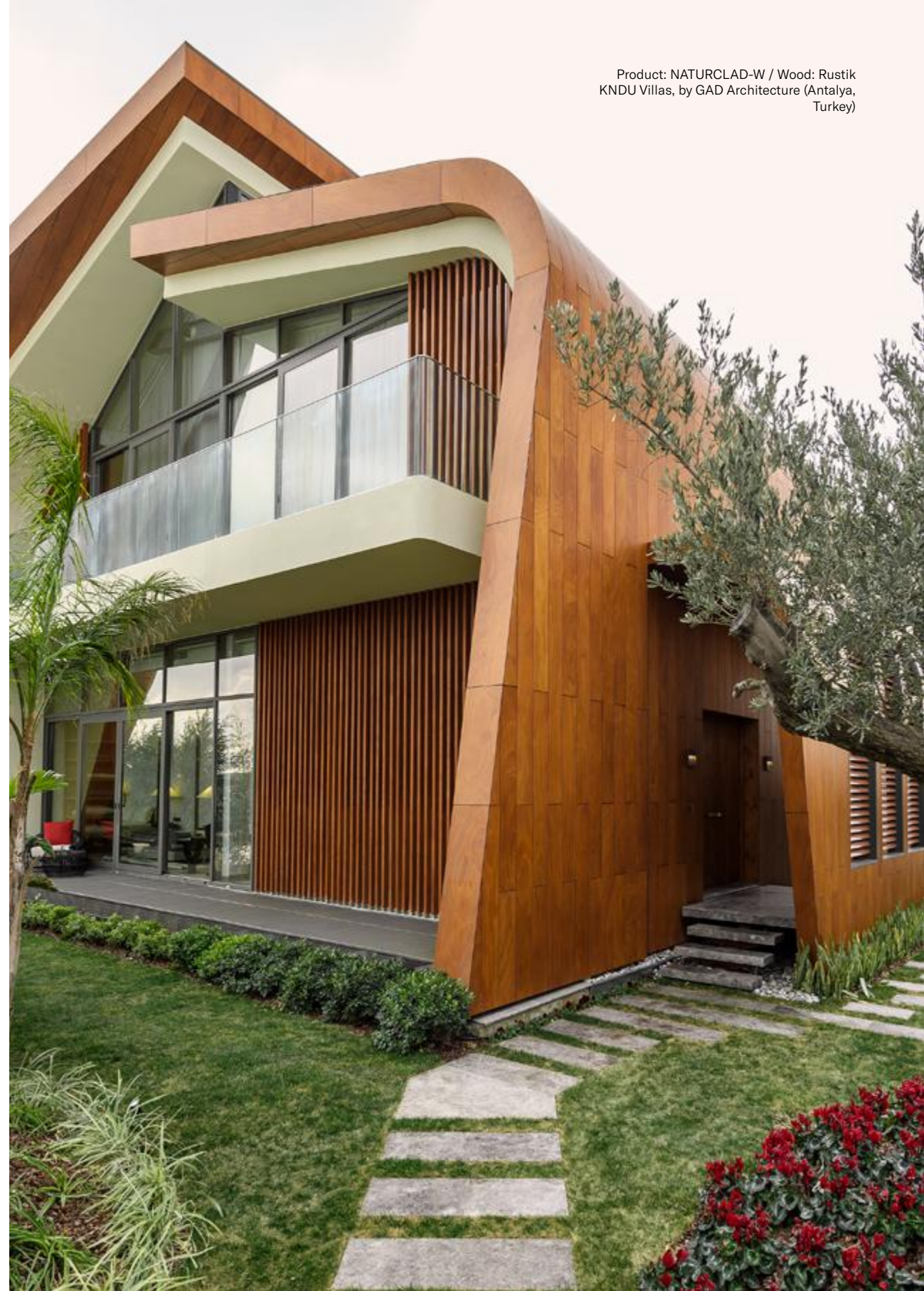


Product: NATURCLAD-W, NATURPANEL-W / Wood: Rustik  
Le Monastère des Augustines, by ABCP Architecture  
(Quebec, Canada)



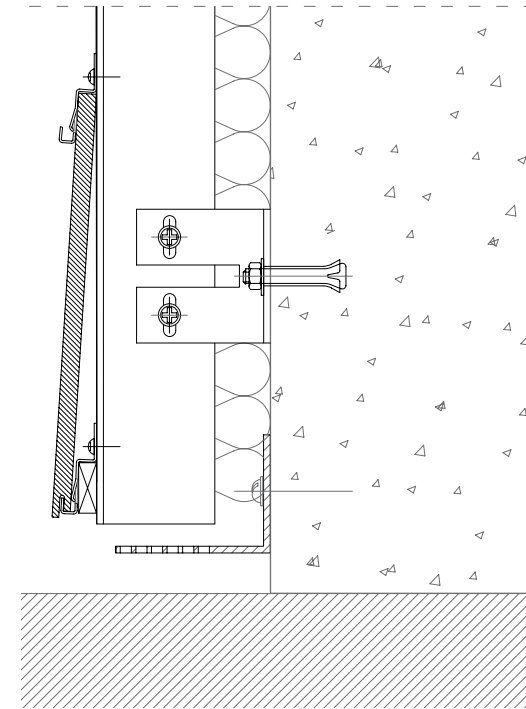
The flexibility of the wood fibres allows NATURCLAD-W panels to adapt to certain radii of curvature, whether concave or convex.

Parklex Prodema offers two different solutions for projects that require NATURCLAD-W to be installed as a curved façade cladding: either standard panels, if radii above 3 m are required; or pre-bent panels, if smaller radii are required.



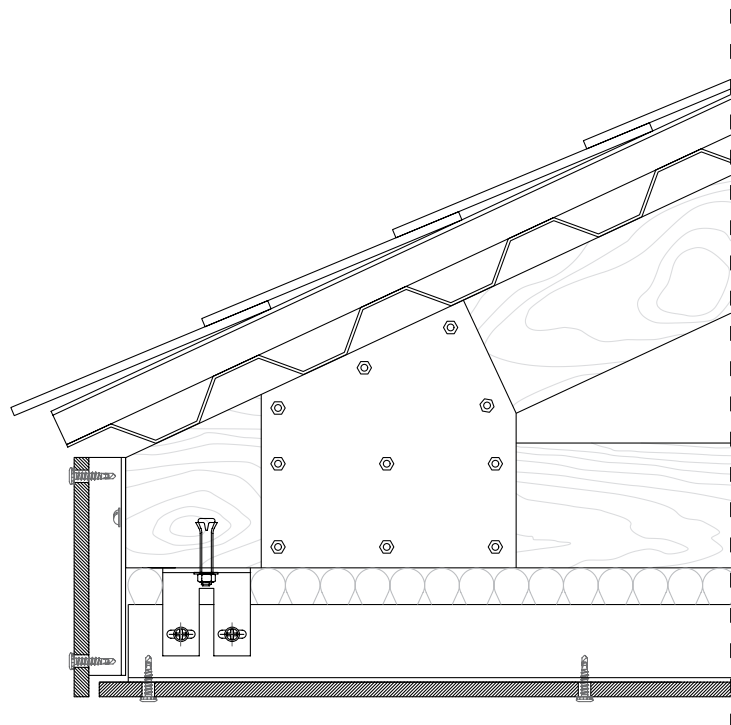


Product: NATURCLAD-W / Wood: Rustik  
Alliance 1892, Cognac Museum and Cellar, by TOTEMENT | PAPER  
(Chernyakhovsk, Kaliningrad, Russia)



The overlapping slats system enables a range of assembly procedures without needing to change the position of the parts' profiles.

Two different slat widths are supplied: 190 and 290 mm, both with a maximum length of 2440 mm. This concealed fixing system is only valid for thicknesses of 8 mm.

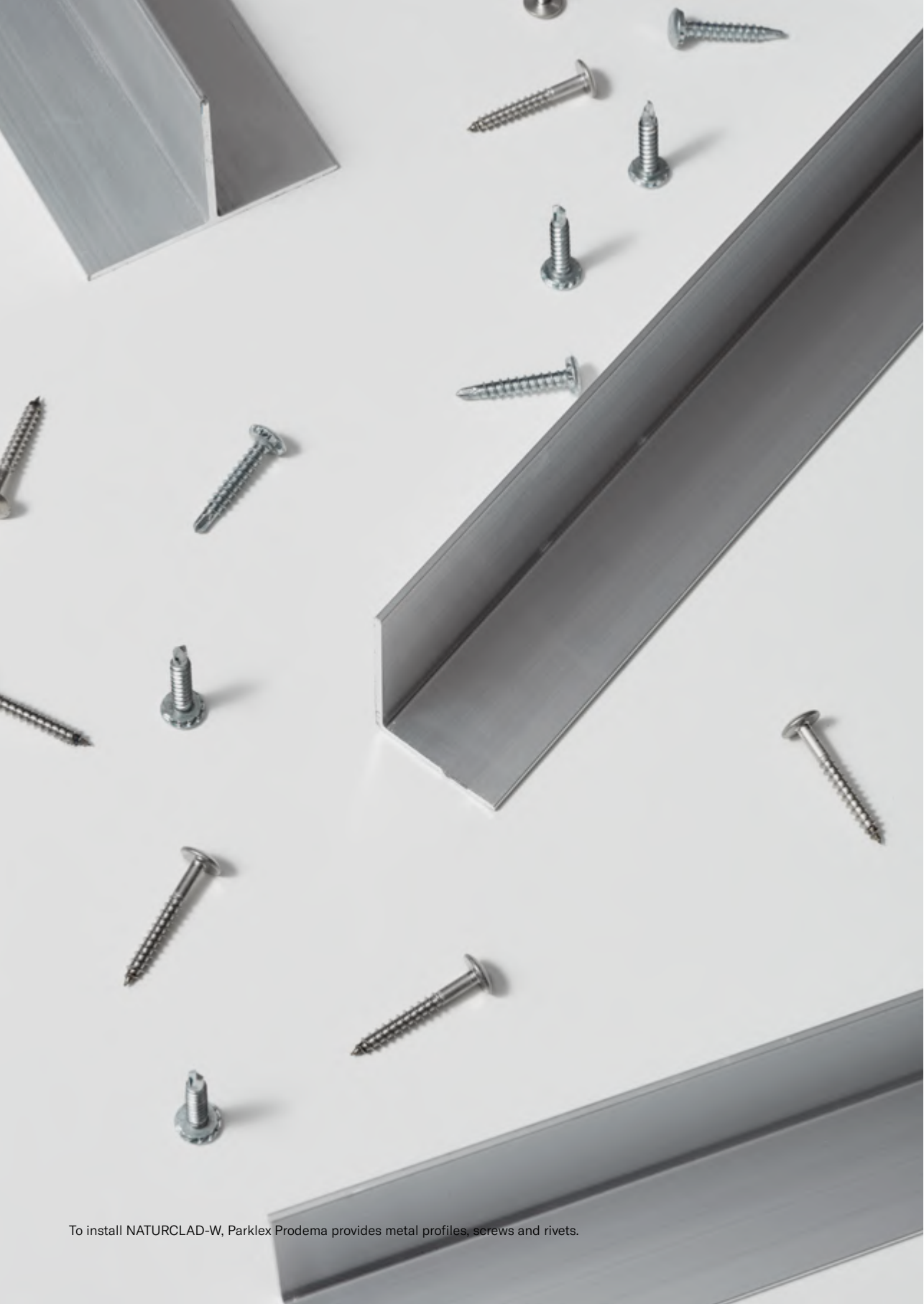


NATURCLAD-W boards can be installed on false ceilings by means of exposed or concealed fixing systems.

In the case of false ceilings, a minimum perimeter space of 20 mm must be left to enable ventilation through the chamber.







To install NATURCLAD-W, Parklex Prodema provides metal profiles, screws and rivets.

EDITING & PRODUCTION  
PARKLEX PRODEMA

ART DIRECTION  
JAUME RAMÍREZ STUDIO

TEXT  
CHESCA GUIM

CORPORATE PHOTOGRAPHY  
MARÇAL VAQUER  
YOSIGO

PROJECT PHOTOGRAPHY  
11H45  
GLEB LEONOV  
JESUS MARTIN RUIZ  
KEVIN G. SMITH

PRINTED IN BARCELONA  
BY AGPOGRAF



[WWW.PARKLEXPRODEMA.COM](http://WWW.PARKLEXPRODEMA.COM)